

School Safety for The BUT/CUT/UNICEF Educational Conference



Jerald Newberry
Executive Director
NEA Health Information Network

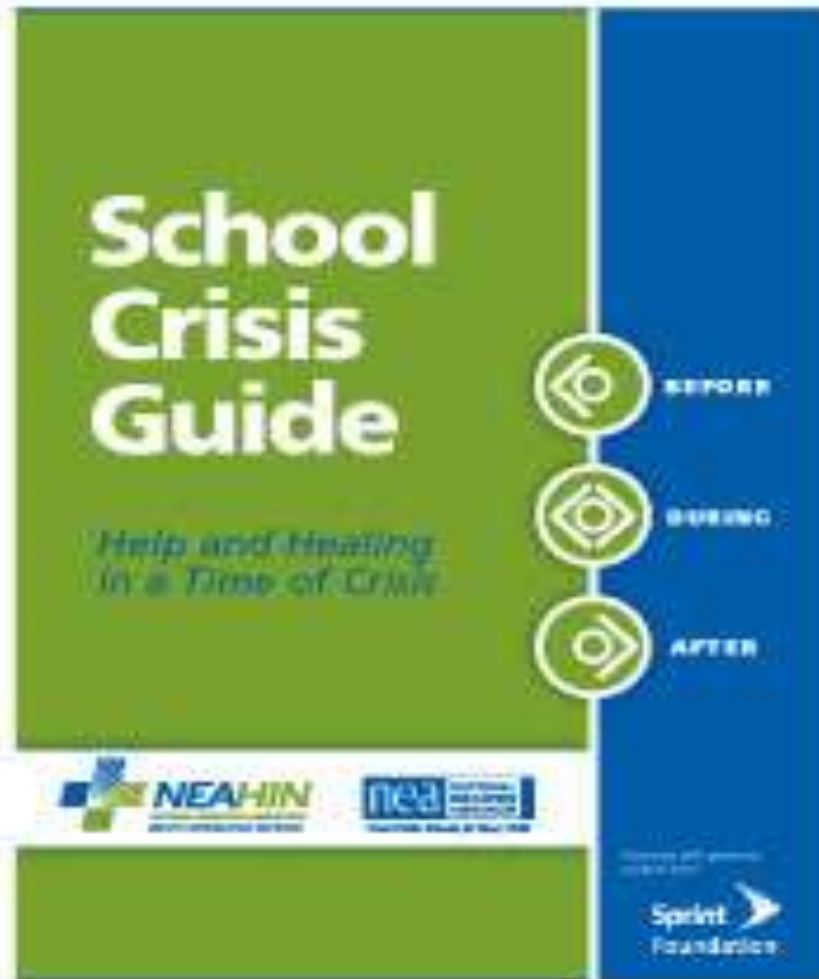


Great Public Schools for Every Child

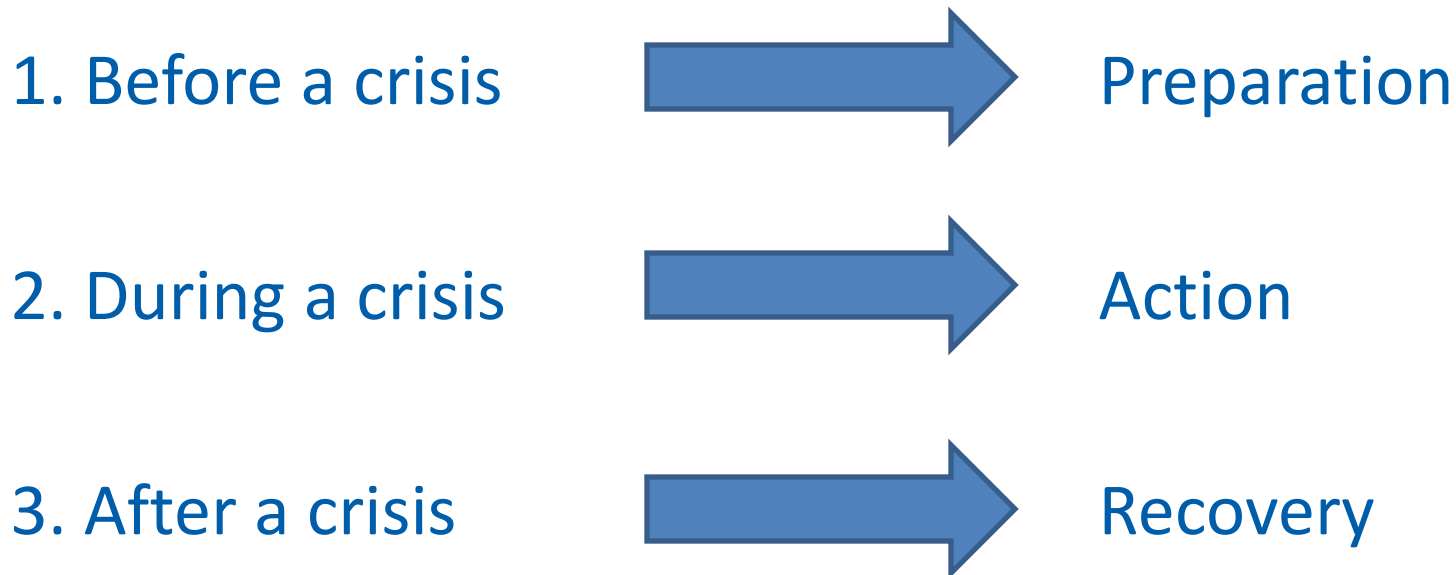
Topics

- Describe HIN and NEA's Crisis Response Plan
- Discuss Best Practices for Crisis Planning, Reaction, and Response
- Review HIN's Disaster Relief Program

HIN and NEA's Crisis Response Plan



The Three Phases of Crisis Management



NEA HIN.ORG

NEAHIN
NATIONAL EDUCATION ASSOCIATION
HEALTH INFORMATION NETWORK

HIN QUICK LINKS

- [CLEAN Award Deadline is Dec. 10!](#)
- [EQ Online Course](#)
- [Iten](#)
- [Register for 2008 IEQ Symposium](#)
- [Journalism Vaccinations Contest](#)

FEATURED NEWS UPDATES

- [NEW Study Links Sleep Deficiencies to Obesity Risk Among Children](#)
- [NEW Study Indicates Produce Too Costly for Low-income Families](#)
- [NEW Federal Safe Routes to School Program Gaining National Momentum](#)

[Click Here for more News and Updates](#)

HIN INFO

NEA HIN is a proud National Supporter of Cover the Uninsured Week

Sign-Up for the School Crisis Guide Newsletter

Email Address Here:

Privacy by [eSafeSubscribe™](#)

Subscribe to bNetS@vvy Email Newsletter

Email Address Here:

Privacy by [eSafeSubscribe™](#)

School Crisis Guide

bNetS@vvy

PLUG-IN TO eCYCLING WITH U.S. EPA

All Proceeds Support the bNetS@vvy Program

Click Above to view bNetS@vvy Tools for Adults to help kids Connect Safely

Click here to take the bNetS@vvy Reader Survey

Click Above to view School Crisis Guide: Help and Healing in a Time of Crisis

Click the eCycling Link to Recycle Your Cell Phone and Help Keep Kids Safer Online

Establish and maintain consistent sleep schedule and routine. Go to bed the same time each night and wake up at the same time each morning.

Work on your memory with a good night's sleep.

About HIN

News & Updates

Programs

Materials & Resources

Contact Us

Visit HIN's Special Focus Site

Can We Talk

NEAHIN.ORG

NEAHIN
NATIONAL EDUCATION ASSOCIATION
HEALTH INFORMATION NETWORK

HIN QUICK LINKS

- CLEAN Award Deadline is Dec. 10!
- IEQ Online Course
- Iran
- Register for 2008 IEQ Symposium
- Journalism Vaccinations Contest

School Crisis Guide

Click Above to view [School Crisis Guide: Help and Healing in a Time of Crisis](#)

Click the eCycling Link to [Recycle Your Cell Phone and Help Keep Kids Safer Online](#)

PLUG-IN TO eCYCLING
WITH U.S. EPA

All Proceeds Support the **bNetS@vvy** Program

Sign-Up for the School Crisis Guide Newsletter

Email Address Here:

Privacy by [eCF SafeSubscribe™](#)

Subscribe to bNetS@vvy Email Newsletter

Email Address Here:

Privacy by [eCF SafeSubscribe™](#)

HIN INFO


NEA HIN is a proud National Supporter of [Cover the Uninsured Week](#)

Crisis Guide Website

NEAHIN.ORG/CRISISGUIDE

School Crisis Guide

Help and healing in a time of crisis



Site Map

- BEFORE A CRISIS
- DURING A CRISIS
- AFTER A CRISIS

TOOLS
Tip sheets, downloadable templates and other resources


Help from NEA and its affiliates

Helpful Web links

Share your feedback

About this guide

Purchase the Guide

 [download print guide](#)

Print the Guide




As educators we are committed to keeping schools safe and supporting children and their families. That is why the National Education Association (NEA) and the National Education Association Health Information Network (NEA HIN) developed this easy-to-use crisis guide with essential, to-the-point advice for schools and districts.

Knowing what to do can be the difference between stability and upheaval. This step-by-step resource created by educators for educators can make it easier for NEA leaders and school district administrators and principals to keep schools safe — so teachers can teach and children can learn.

The guide also suggests ways for NEA state and local associations to lend expertise, saving schools precious time in the midst of a crisis and helping children and staff return to learning.

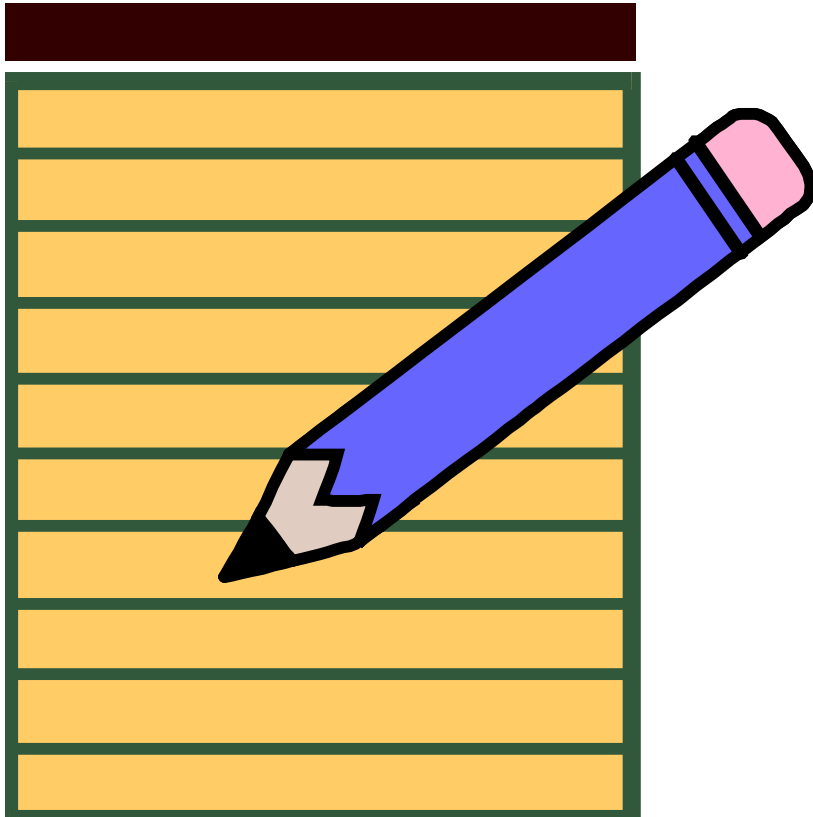
[Click here for resources and lesson plans relating to natural disasters](#)

[Click here for more information on Staph Infections](#)

 BEFORE A CRISIS <i>Prepare for emergencies</i>	 DURING A CRISIS <i>Respond competently as a crisis unfolds</i>	 AFTER A CRISIS <i>Help students and staff recover</i>
<ul style="list-style-type: none">• Creating a plan<ul style="list-style-type: none">– District– School– Who’s at the table?– How laws impact the plan– Crisis response teams– Types of crises– Prevention programs– Communications & media relations– Training– Plans for recovery• Have a plan?<ul style="list-style-type: none">– Evaluating the plan– Updating the plan	<ul style="list-style-type: none">• Day one — first hour• Day one — first 12 hours• Day one — evening• Day two• First week• Back to school	<ul style="list-style-type: none">• Long-term mental health needs• Handling donations• Managing long-term reminders• Long-term communications and media strategies• Evaluating your response• Revisiting your plan

BEFORE A CRISIS

Being Prepared Before a Crisis



- Create a School Safety and Crisis Response Plan
- Staff In-Service and on-going practice w/plans
- School/District Safety Coordinator
- Team Composition
- School Discipline Plan

Being Prepared Before a Crisis

- Schools & Classrooms free of hazardous materials and with healthy air quality
- Compliance with fire codes
- Secure campuses with necessary fencing & gates
- Natural disaster - supplies

Being Prepared Before a Crisis: Components of a Plan



- Prevention
- Staff Roles and Responsibilities
- Policies and Procedures
- Communication
- School Safety Assessment
- Emergency Response Procedures

Crisis Guide - Before a Crisis

Key Action Steps:

- Know the school building so that you can assess potential hazards
- Know the community so that you can assess the probability of natural disasters; industrial accidents; and potential threats related to terrorism
- Developing, implementing, and maintaining an emergency preparedness and crisis response plan
- Assembling a school crisis response team

What to During a Crisis

DURING A CRISIS

NEA Response to a Crisis

- (Notification) First- Initial Response
 - News of crisis is sent to HIN
 - HIN receives word and notifies NEA Executive Staff

Steps to Take During a Crisis

- Determine whether a crisis exists, and if so, the type of crisis, location, and magnitude
- Respond within seconds
- Notify appropriate emergency responders and the school crisis response team
- Evacuate or lock down school, as appropriate

Steps to Take During a Crisis, cont.

- Triage injuries and provide first aid to those who need it.
- Communicate accurate and appropriate information.
- Activate student release system.

NEA Response to a Crisis

- HIN(Immediate Action)
 - Direct responders to Crisis Communications Guide, classroom resources, student aid, in state crisis team
- NEA Executive Leadership (Immediate Action)
 - Media Relations Team Alerted
 - Direct inquires to Jerry Newberry if needed
 - Support state affiliate as needed

NEA Response to a Crisis

- HIN(Final Action)
 - HIN gathers information and will serve as a conduit between local, state, and national offices
- NEA Executive Leadership (Final Action)
 - In the event of a fatality, Dennis Van Roekel will write a condolence letter to local leadership
 - State Executive Director can request Crisis Team Assistance from NEA

Restoring the Teaching Environment

AFTER A CRISIS

Restoring the Learning/Teaching Environment after a Crisis

- Keep students, families, and the media informed. Let families know what support services are being provided.
- Return students to learning as quickly as possible.
- Conduct safety audits of school building and plan for repairing damaged areas.

Restoring the Learning/Teaching Environment after a Crisis, cont.

- Provide assessment of emotional needs of staff, students, families, and responders. Arrange for appropriate interventions.
- Allow students to talk about what they felt and experienced during the crisis.
- Conduct daily debriefings for staff, responders, and others assisting in recovery.

Review

- Examine the components of an emergency preparedness and crisis response plan
- Identify ways to avoid crises
- Determine key functions of the school crisis response team
- Explore the role of the NEA affiliate in emergency preparedness and crisis response.

Feedback

Trainer

- Jerry Newberry

Contact Information

- jnewberry@nea.org
- 202-822-7570

Thank you

- NEA Health Information Network
- www.neahin.org
- <http://neahin.org/crisisguide>
- 202-822-7570